

# M&E framework of TB action plan for the WHO European Region 2023-2030

## Indicators, targets and milestones

Regional TB Action Plan (M&E framework)

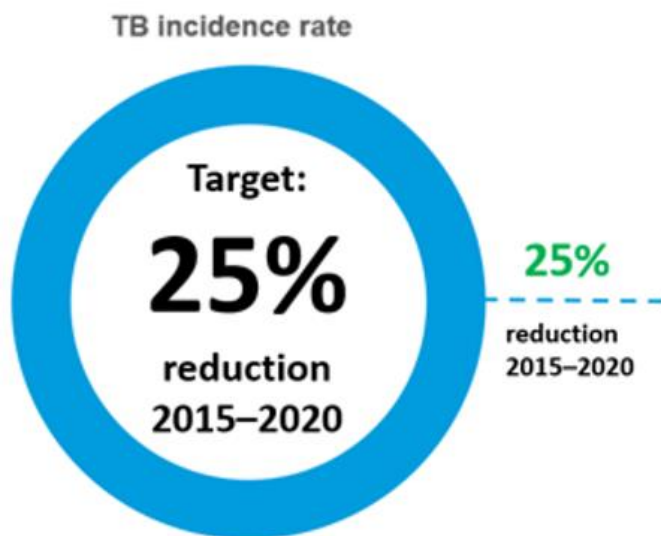
Dr Giorgi Kuchukhidze  
Epidemiologist  
Division of Country Health Programmes  
WHO Regional Office for Europe



European Region

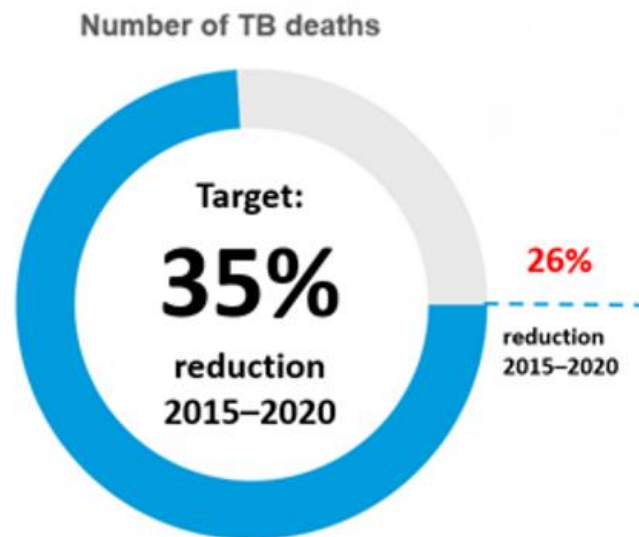


# Progress up to date (2020 data)



Incidence

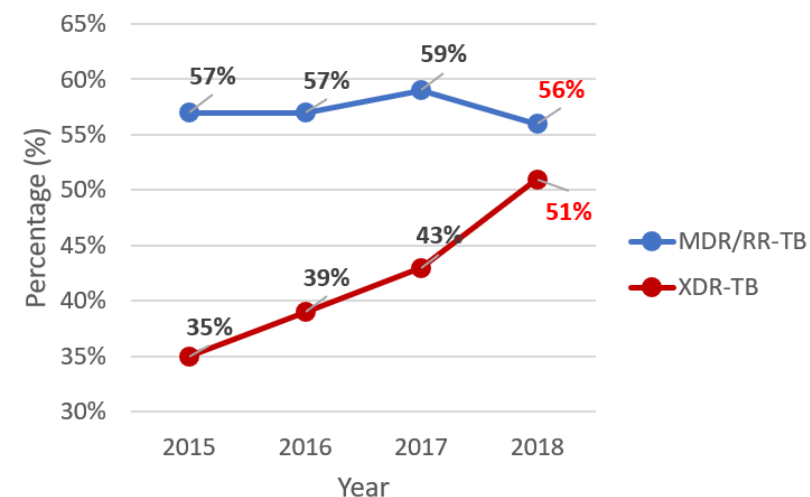
**TARGET MET**



Mortality

**TARGET NOT MET**

Treatment success rate for MDR/RR-TB and XDR-TB cases started on 2<sup>nd</sup>-line treatment



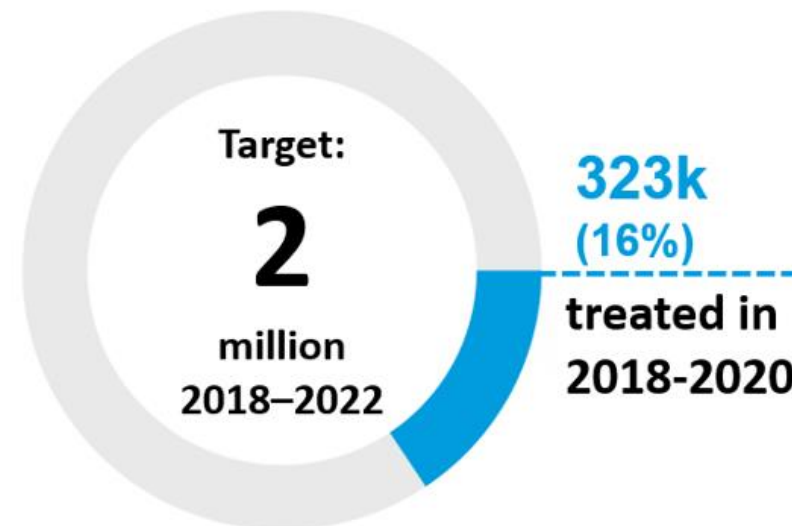
Successful tx outcome  
75%

**TARGET NOT MET**

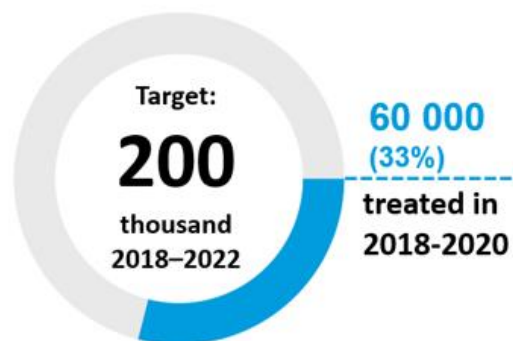
# Regional Progress Towards UNHLM targets:

## TB preventive treatment

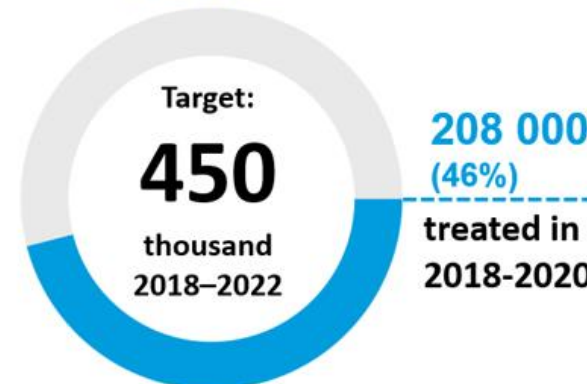
TB preventive treatment  
(all ages)



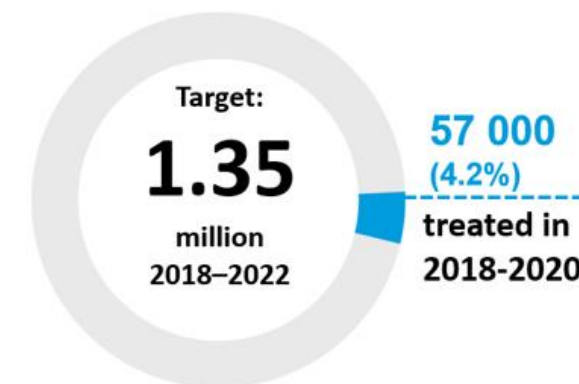
Household contacts  
Aged <5 years



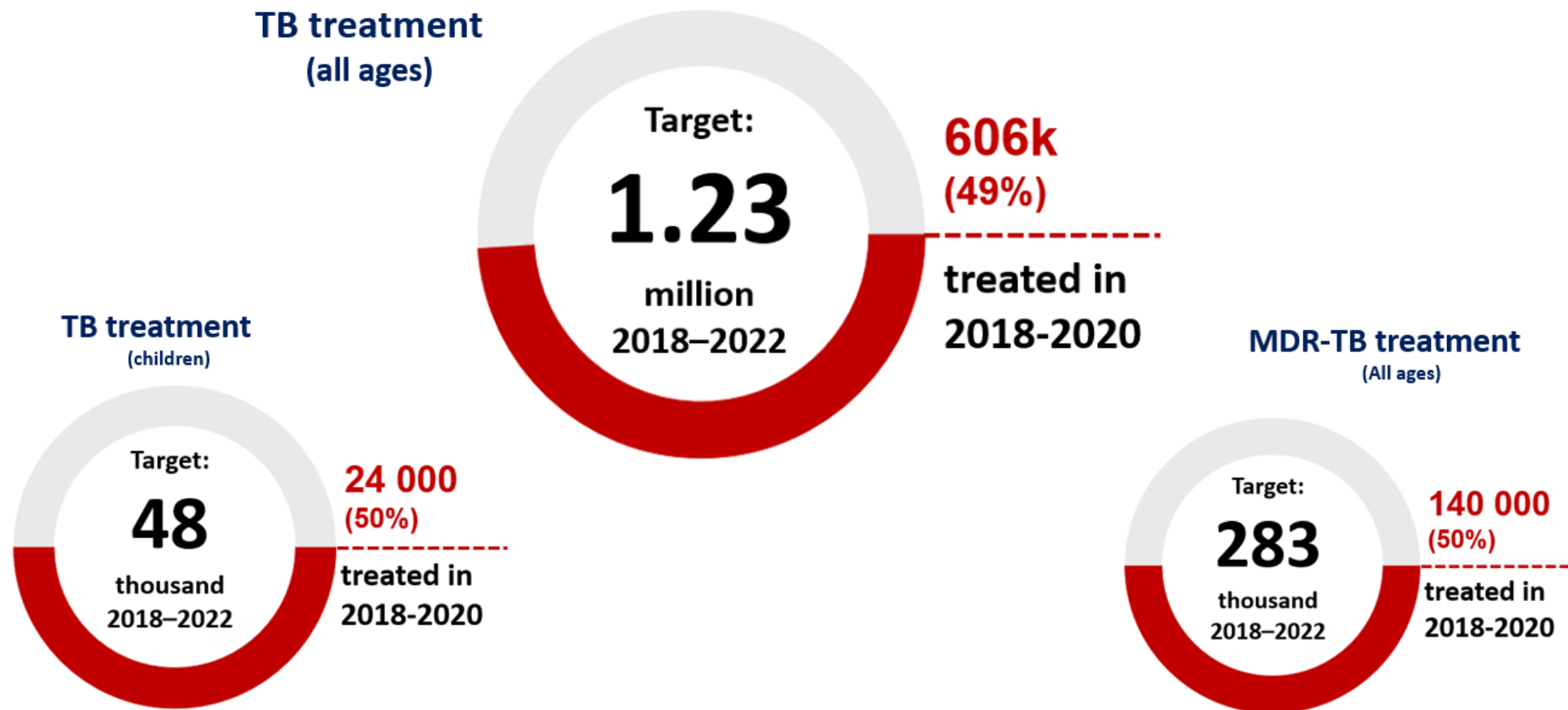
Household contacts  
Aged ≥5 years



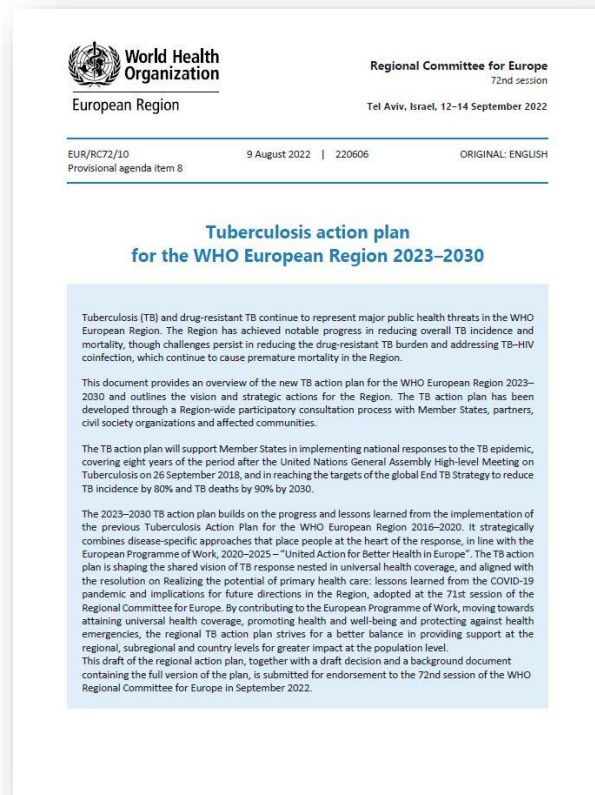
• People living with HIV



# Regional Progress Towards UNHLM targets The Number of People Treated for TB in 2018-2020



# Tuberculosis action plan for the WHO European Region 2023–2030



[Link](#)

## Regional milestones (to be achieved by 2025) [compared to 2015 levels]

75% reduction in TB deaths

50% reduction in TB incidence rate

80% treatment success rate among RR/MDR-TB

## Regional targets by 2030 [compared to 2015 levels]

90% reduction in TB deaths

80% reduction in TB incidence rate\*

85% treatment success rate among RR/MDR-TB

---

# Development timeline of the M&E framework

- Initial draft developed by SRM experts (Aug 2019)
- Revision and finalization by the Task Force (Oct 2019–Jan 2020)
- Public consultation (Feb – Mar 2020)
- Alignment with TB Action Plan for the WHO European Region 2023-2030 (Jan-May 2022)

---

# 2022 revision: alignment with the TB Action Plan 2023-2030

- Terminology and definition of indicators were updated
  - LTBI treatment to TPT
  - XDR-TB to pre-XDR-TB
- Additional indicators were introduced
  - Coverage with FQ-susceptibility testing among MDR/RR-TB
  - Screening of TB patients for mental and substance use disorders
  - Proportion of individuals who received TB treatment and care using digital adherence technologies
- Baseline values were updated with the latest available data

# Structure of the M&E Framework

- 30 indicators linked to key areas of intervention under 3 pillars
- Global core 10 indicators (G)
- Additional 4 priority EURO indicators (E)
- 4 civil society engagement related indicators

Pillar 1: Integrated people-centered care and prevention

Pillar 2: Bold policies and supportive systems

Pillar 3: Intensified research and Innovation

People at the center

Comprehensive TB prevention

Systematic screening for TB

TB diagnosis

TB treatment and care

Governance and Leadership

Health finance and UHC

Health workforce

Strategic information and Digital health

PSM

New interventions and strategies

Implementation research



# Structure of the M&E Framework (cont.)

Monitoring framework for follow up of the TB action plan for the WHO European Region, 2021 - 2030										
Intervention area	Indicator	Baseline for WHO European Region (2018)	Milestone (2025)	Target (2030)*	Frequency of assessment	Data Source	Layers of analysis	Monitoring mechanism <sup>1</sup>	Indicator Definition	Indicator Level
<b>1. INTEGRATED, PATIENT-CENTRED CARE AND PREVENTION</b>										
<b>1.A. Systematic screening of contacts and high-risk groups</b>										
1.A.1	Coverage of contacts with systematic screening for active TB (G)	97%	≥90%	≥90%	annual	WHO Global TB database	EUR HPC EU/EEA	Routine reporting	<p>Numerator: Number of contacts of TB patients identified in the reporting year who were screened for TB*</p> <p>Denominator 1: Number of contacts of active TB patients identified in the reporting year</p> <p>Denominator 2: Estimated number of household contacts of TB patients in the reporting year **</p> <p>*According to the national guidelines</p> <p>**For measuring the coverage of the contact investigation source: United Nations, Department of Economic and Social Affairs, Population Division. Household Size and Composition Around the World.</p>	Output

Baseline

Milestone 2025

Target 2030

Frequency of assessment

Data Source

Group of countries analyzed

Data source

Detailed definition of indicators

Level of indicator



# Monitoring and evaluation framework: the list of indicators, pillar 1

## Pillar 1: Integrated people-centered care and prevention

People at the center

Comprehensive TB prevention

Systematic screening for TB

Early TB diagnosis

Indicators	Latest year	2025	2030
Number of Member States with adopted standards and operational procedures for civil society organizations (CSOs) in the provision of psycho-social support services to ensure treatment adherence for people with TB	N/A	≥60%	TBD
Number of Member States with adopted procedures of subcontracting mechanisms under the state funds or other relevant funding mechanisms for CSOs in the provision of psycho-social support and active case-finding services for people with TB	N/A	≥60%	TBD
TB preventive treatment (TPT) coverage (%) among PLHIV <b>(G)</b>	80%	≥99%	≥99%
TPT coverage (%) in childhood TB contacts aged <5 years <b>(E) (G)</b>	30%	≥90%	≥95%
Coverage of contacts with systematic screening for active TB <b>(G)</b>	98%	≥90%	≥90%
Percentage of notified new and relapse TB patients tested using WRD <b>(G)</b>	72%	≥90%	≥95%
Bacteriological confirmation: Percentage of new and relapse pulmonary TB patients who are bacteriologically confirmed	67%	>90%	>90%
Testing for drug resistance: Percentage of people diagnosed with bacteriologically confirmed TB who had a documented susceptibility test result for rifampicin <b>(G)</b>	92%	100%	100%
Testing for additional drug resistance: Percentage of people with RR-TB who had a documented susceptibility test result for fluoroquinolones	94%	100%	100%
RR/MDR-TB case-detection rate (%)	94%	≥90%	≥95%
TB case-detection rate (%)	71%	≥95%	≥95%
TB incidence rate per 100 000 population <b>(E)</b>	25%	-50%	-80%
RR-MDR/TB notification rate per 100 000 population	N/A	-1-5%	-1-5%



European Region

N/A=Not available; TBD=To be defined

# Monitoring and evaluation framework: the list of indicators, pillar 1

Pillar 1: Integrated people-centered care and prevention

TB treatment and care

Indicators	Latest year	2025	2030
Percentage of patients starting first-line TB treatment at the outpatient health care level <b>(E)</b>	TBC	DD	DD
Percentage of notified RR/MDR-TB patients enrolled in treatment <b>(E) (G)</b>	100%	≥99%	≥99%
Treatment success rate (%) among all new and relapse TB patients <b>(E) (G)*</b>	77%	≥90%	≥90%
Treatment success rate (%) among the RR/MDR-TB treatment cohort <b>(E) (G)</b>	56%	≥80%	≥85%
Treatment success rate (%) among pre-XDR-TB treatment cohort <b>(E) (G)</b>	51%	≥75%	≥80%
Total number of TB deaths <b>(E) (G)</b>	21k	-75%	-90%
TB/HIV case-detection rate (%)	68%	100%	100%
HIV testing coverage (%) <b>(E) (G)</b>	93%	100%	100%
Percentage of HIV positives among new and relapse TB patients with documented test results <b>(E)</b>	15%	DD	DD
ART coverage (%) among TB/HIV patients	74%	100%	100%
Screening of TB patients for mental and substance use disorders	N/A	100%	100%

# Monitoring and evaluation framework: the list of indicators, pillar 2

## Pillar 2: Bold policies and supportive systems

Governance and Leadership

Health finance and UHC

Health workforce

Strategic information and Digital health

PSM

Indicators	Latest year	2025	2030
Number of Members States that have a TB control strategy document publicly available that includes targets for reduction in TB mortality and incidence in line with the regional and global targets set in the resolution WHA67.1 and EUR/RC70/RX (E)	N/A		N/%
Percentage of TB-affected households that experience catastrophic costs due to TB (E) (G)	N/A	0%	0%
Proportion of people with TB found through active case-finding activities implemented through CSOs	N/A	≥40%	TBD
Proportion of people with TB who started TB treatment and who received any form of treatment adherence support from CSO (including psychosocial support)	N/A	≥60%	TBD
Proportion of individuals who received TB treatment and care using digital adherence technologies (e.g. video-supported treatment of TB)	N/A	≥30%	≥40%

# Monitoring and evaluation framework: the list of indicators, pillar 3

Pillar 3: Intensified research and Innovation

Implementation research

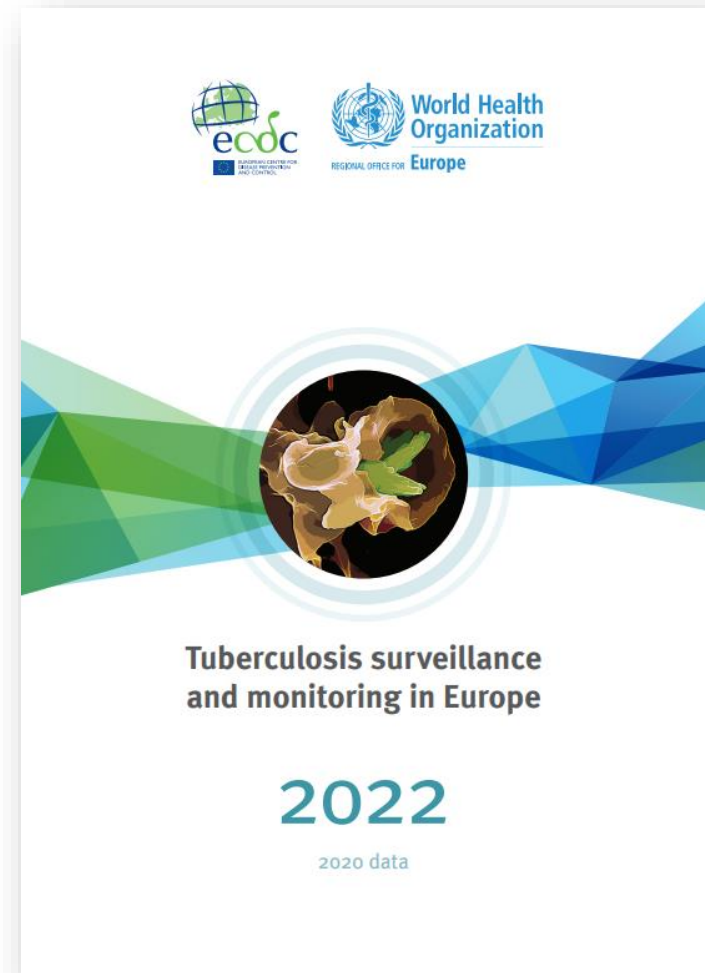
New interventions and strategies

Indicators	Latest year	2025	2030
Number of Member States with a standing alone national TB research agenda or research priorities integrated in the national TB strategic plans or relevant policies	N/A		N/%

# Monitoring & reporting the progress

- WHO guidance on TB surveillance
- Working with partners
- Supporting countries in reviewing their TB surveillance systems

## [TB surveillance and monitoring in Europe report](#)



---

# Thank you

For more information, please contact:

[eurotb@who.int](mailto:eurotb@who.int)



European Region